

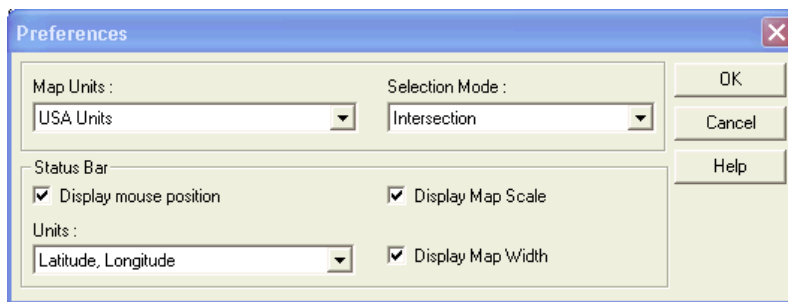
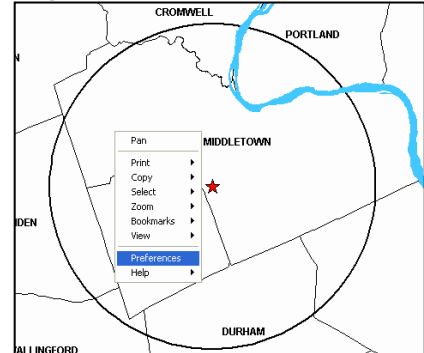
### Utilizing Map Preferences

The Preferences allow you to customize some of the mapping functions. To access all of these options, right-click anywhere inside the map and select Preferences from the drop-down menu as shown in the figure on the right.

The Preferences window will then appear on your screen (see below). You may choose the **Map Units** to be displayed in either USA Units (miles) or Metric Units (kilometers).

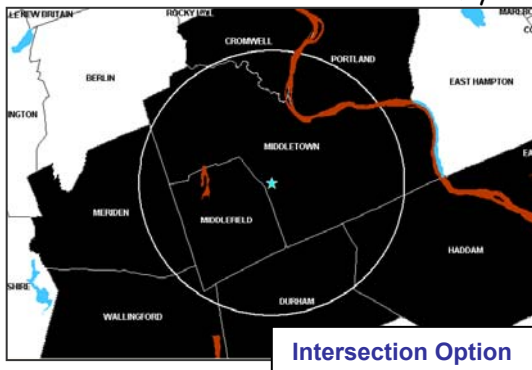
The **Status Bar** is the gray bar that runs along the bottom of the map. You can choose to **Display the Mouse Position**, so the coordinates of the mouse will be visible on the left in the status bar. The coordinates will be expressed in either latitude/longitude or mapping coordinate units. You can also opt to **Display the Map Scale** and **Display the Map Width** on the right in the status bar.

Right-Click and Select Preferences

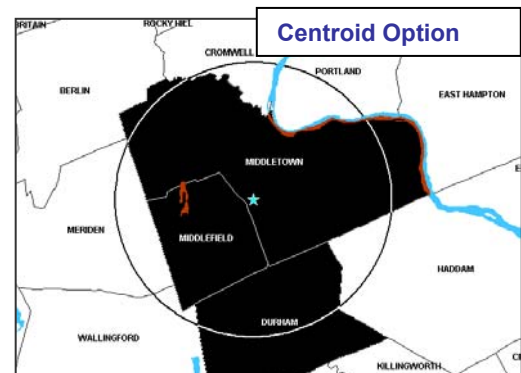


The **Selection Mode** is relevant when selecting geographies within a customized radius or drive time (refer to the July 2003 User News for details on the "Select Within" function; [http://www.cerc.com/pdfs/df\\_news\\_7-03.pdf](http://www.cerc.com/pdfs/df_news_7-03.pdf)). Selecting the Centroid option means that if you are using the "Select Within" function and the physical center of a geography is inside the radius or drive time, then the entire geography will be included in the selection. The Intersection mode means that if you use the "Select

Within" function and any part of the geography is inside the radius or drive time, then the entire geography will be included.



Within" function and any part of the geography is inside the radius or drive time, then the entire geography will be included.



### Contact CERC for Additional Training

To brush up on your DataFinder skills, contact Alissa DeJonge (860-571-6206), Dale Shannon (860-571-6209) or [datafinder@cerc.com](mailto:datafinder@cerc.com) with any questions.

### CERC User News on the Web

As always, previous editions of DataFinder User News are on the Web for your reference. Just go to <http://www.cerc.com/detpages/services704.html> to review the monthly topics.