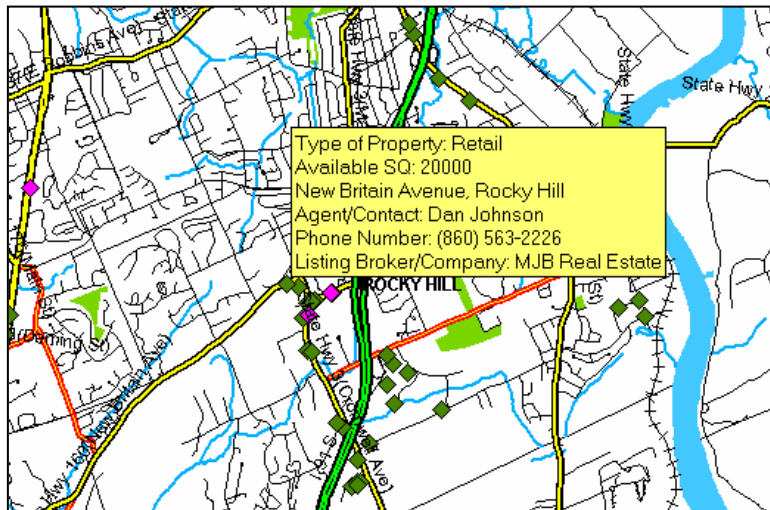
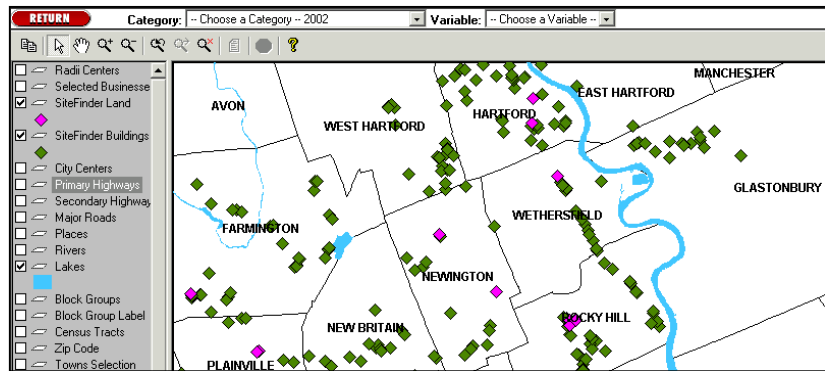


## SiteFinder™ Update in DataFinder™

SiteFinder is Connecticut's comprehensive source of available commercial and industrial real estate properties. And DataFinder users can easily view the real estate on a map—simply click on the SiteFinder land and building options in the toolbar to the left of the map, as shown in the picture below.

Currently, the SiteFinder properties are updated on a quarterly basis in DataFinder. If you are a DataFinder user who uses this SiteFinder option frequently, please let us know and we will strive to keep the real estate properties even more current.



More than 1,600 buildings and 200 land parcels listed in SiteFinder are able to be identified on the DataFinder map. By positioning your mouse over one of the SiteFinder land or building symbols on the map, you will call up information about the property including the property type, available square feet, address, agent or contact person, phone number and listing company.

## Contact CERC for Additional Training

To brush up on your DataFinder skills, contact Alissa DeJonge (860-571-6206), Dale Shannon (860-571-6209) or [datafinder@cerc.com](mailto:datafinder@cerc.com) with any questions.

## CERC User News on the Web

As always, previous editions of DataFinder User News are on the Web for your reference. Just go to <http://www.cerc.com/detpages/services704.htm> to review the monthly topics.